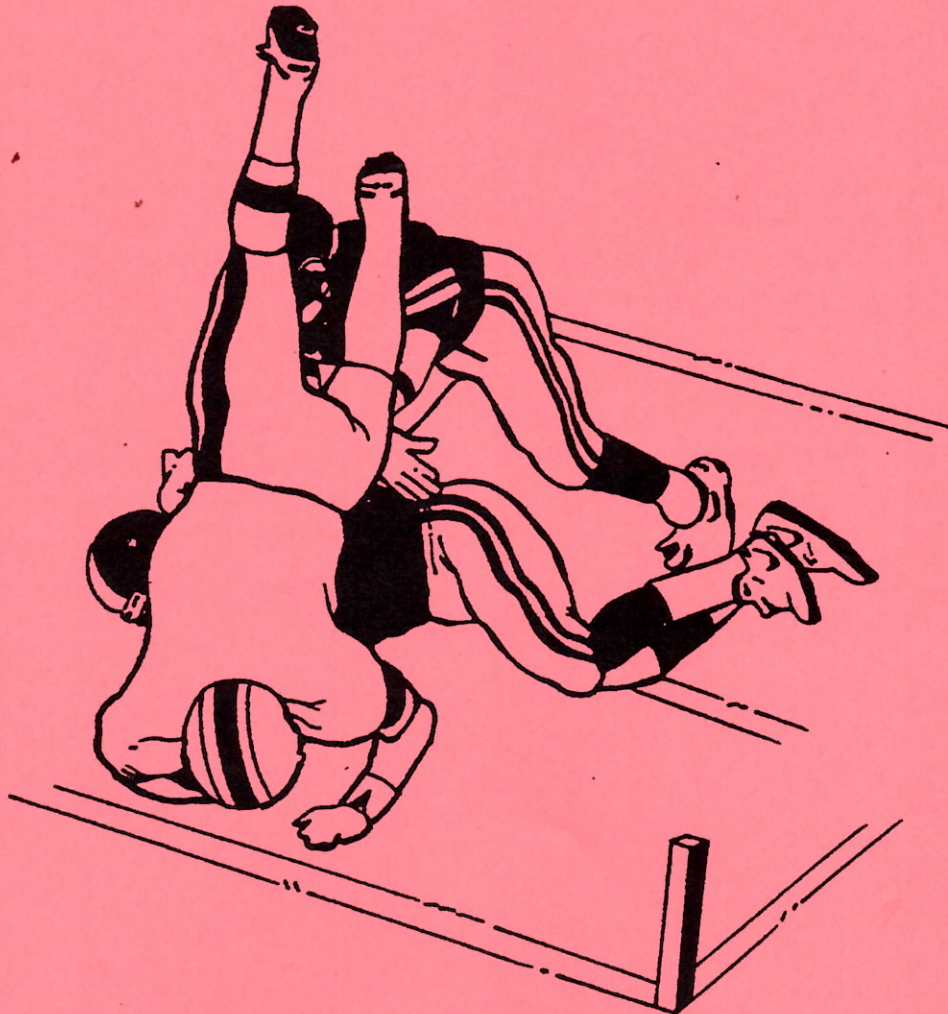


SUCCESS COMES IN SMALL BITES

The measurement is "do or die" in some situations. Closely associated with the measurement is the accurate markings of forward progress. The two go hand-in-hand. As a crew, we must immediately recognize when the line to gain has been satisfied. Communicate to the Referee that he should "take a look". Please do not stop the clock *UNLESS YOU ARE SURE IT IS A FIRST DOWN*. If you stop the clock by mistake ALERT THE REFEREE TO WIND MWDIATELY!



SIDE JUDGES: Hustle and mark the following stake during a measurement. Also help out with a "fresh" ball as appropriate. Move crisply during the measurement process and please do not discuss the merits of a "spot" with bench personnel on your sideline. HELP THE CREW SELL THE CALL!

FIELD MECHANICS, ONE MORE TIME

The marking of forward progress is still an item of great concern. Officiating staffs throughout the country are criticized more for lack of consistency in this area than perhaps any other phase of the game.

Wing officials shoulder a significant burden. Over 90% of forward progress spots *are established by this group*. Points requiring review:

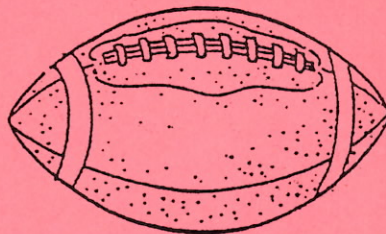
- *Know and understand what constitutes forward progress*
- *Use approved mechanics for establishing forward progress*
- *Know when a live ball becomes dead*

The officiating team must be responsive to down and distance situations. **React accordingly.** Maintain good coordination and field coverage. Communicate on those situations *which may* be close. ALWAYS get the ball to the *official who has* marked the spot. Remember, we need not CHARGE every spot. SELL YOUR CALL.

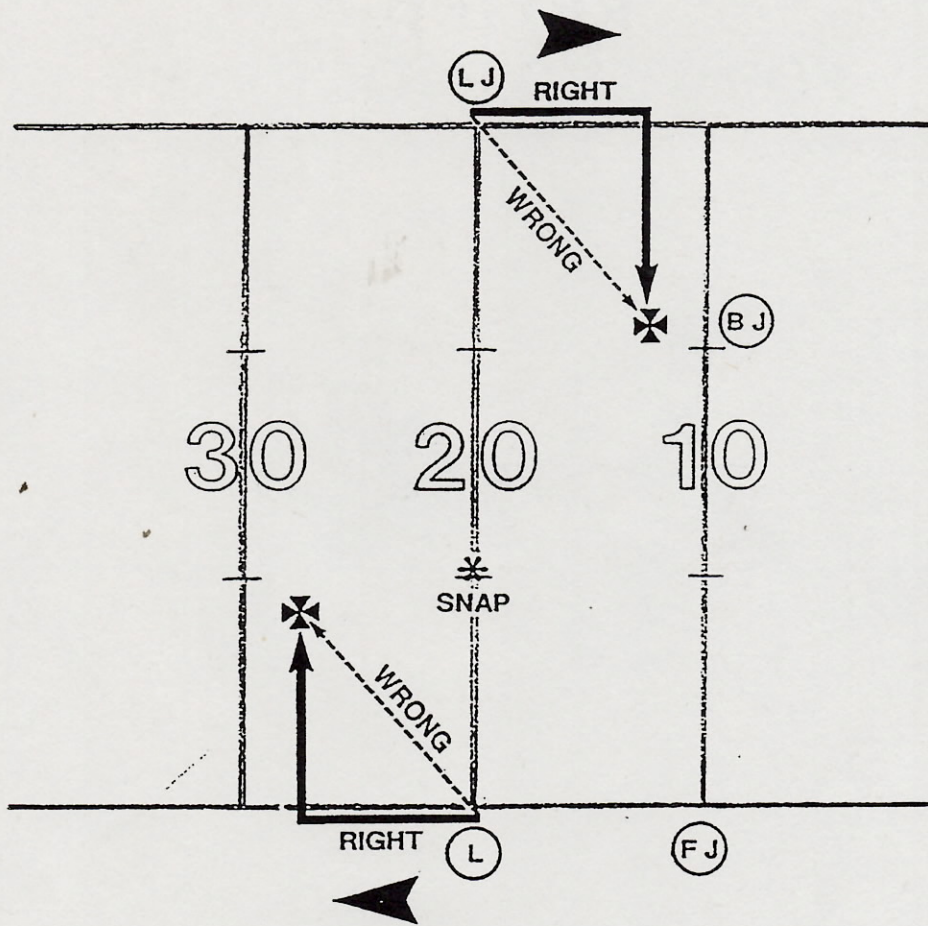
Work with referee and communicate with him when 1st down is close. "**Take a Look**" is always a good alert phrase. As we take a look, shut the clock down - repeat the signal and ensure the clock operator picks : up. *Time is always a precious commodity.*

Teams work very hard to gain and deny positive yardage, first downs and ultimately scores. The officiating crew must work to do an accurate job. Some other considerations are:

- YIELD SPOTS TO AN OFFICIAL WHO HAS ESTABLISHED FORWARD PROGRESS. GOOD EYE CONTACT. NEVER DEBATE A SPOT!
- UMPIRES AVOID CRITICISM AND SPOT AWAY FROM THE LINESMAN SIDE.
- WHEN POSITIONING A FRESH BALL, MAKE SURE OF PLACEMENT BEFORE REMOVING THE SIDE ZONE BALL



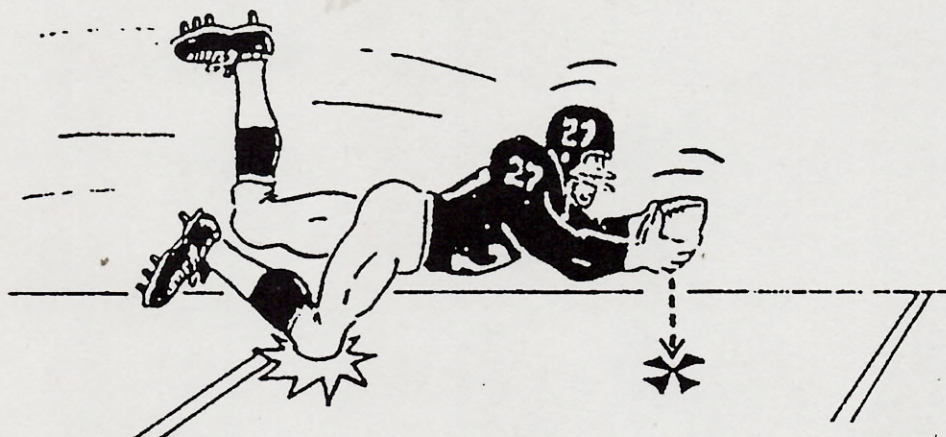
THE WIDER THE BETTER



FORWARD PROGRESS

- **IMPROVE CONSISTENCY**
- **IMPROVE POSITIONING AT SNAP "WIDER IS BETTER"**
- **IMPROVE FIELD PERSPECTIVE**
- **ELIMINATE 45 DEGREE SPOT; USE 90 DEGREE SPOT**
- **COORDINATION OF SIDE LINE RESPONSIBILITY**
- **CONSISTENCY ON RUN OR PASS DOWNS**

REVIEW FORWARD PROGRESS



- ***IMPROVE, IMPROVE!!***
- **MECHANIC REQUIRES CONCENTRATION**
- **CONSISTENCY IN FIELD POSITION**
- **ALWAYS USE LEAD FOOT**
- **REFINE PROCESS**
- **RECOGNIZE POINT OF ATTACK**
- **POSITIVE THOUGHT PROCESS EQUALS POSITIVE RESULTS**

***CONSISTENCY FOR THIS APPLICATION
HAS POSITIVE GAME IMPACT!!***

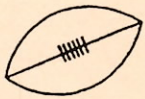


FORWARD PROGRESS

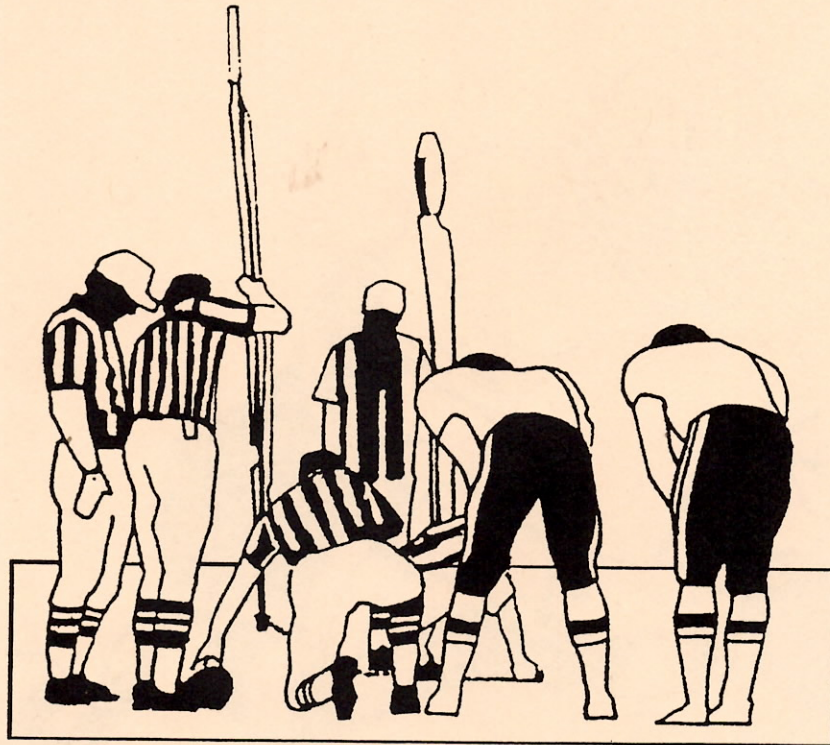
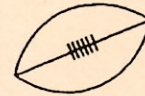


- POSITIONING REMAINS ... NUMBER ONE CONCERN (WIDER IS BETTER)
- INCREASE FIELD PERSPECTIVE ... BETTER WINDOW FOR ALL CONCERN
- RESPONSIBILITY EXTENDS BEYOND AND BEHIND LINE OF SCRIMMAGE
- GIVE THE BALL CARRIER ALL THE YARDAGE EARNED
- REVIEW CONDITIONS WHERE BALL BECOMES DEAD BY RULE
- WHISTLE CONTROL IS PRIMARY
- ALWAYS ... KNOW STATUS OF BALL

THIS REQUIRES TOTAL CONCENTRATION ... IMPROVE



IT'S A GAME OF INCHES



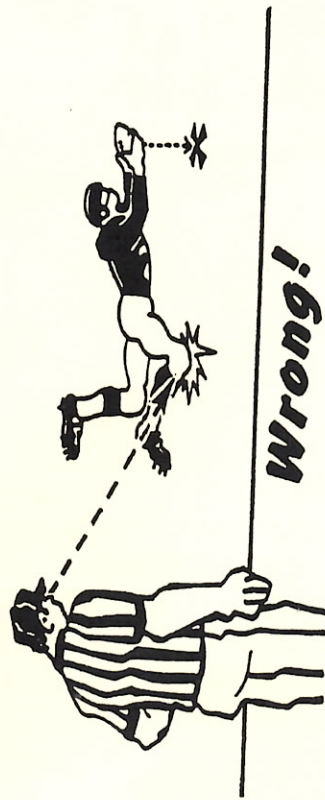
BE ALERT FOR SURGES BY RUNNER

USE EFFECTIVE WHISTLE CONTROL

ACCURATELY DETERMINING FORWARD PROGRESS IS A MOST CRITICAL GAME ELEMENT. WE ARE CRITICIZED MORE FREQUENTLY OVER THIS MECHANIC THAN PROBABLY ANY OTHER ASSOCIATED WITH OFFICIATING. WE MUST GIVE THE RUNNER THE DISTANCE HE EARNS!! TEAM'S THAT RELY ON THE RUN TO ADVANCE THE FOOTBALL "LIVE AND DIE BY THE SPOT". AN EFFICIENT GROUND ATTACK IS SIMILAR TO COMBAT, WITH FIERCE INDIVIDUAL STRUGGLES OCCURRING AT THE LINE OF SCRIMMAGE. WE NEED IMPROVEMENT IN THIS AREA.

- PROPER POSITION AT THE SNAP
- READ KEYS AND RECOGNIZE "POINT OF ATTACK"
- RECOGNIZE WHEN THE BALL BECOMES DEAD BY RULE
- RESPONSIBILITY IS EQUALLY DIVIDED WITHIN THE CREW
- USE LEAD FOOT TO MARK ADVANCE
- NEVER GUESS

- USE SIDE LINE EFFECTIVELY – “OUTSIDE IN”
- ESTABLISH BEST POSITION POSSIBLE TO EVALUATE FORWARD PROGRESS
 - IMPROVED TECHNIQUES BEYOND AND BEHIND LOS
 - USE LEAD FOOT TO MARK PROGRESS



DON'T OVER HUSTLE! DON'T OVER SELL!!

BE CONSISTENT!!