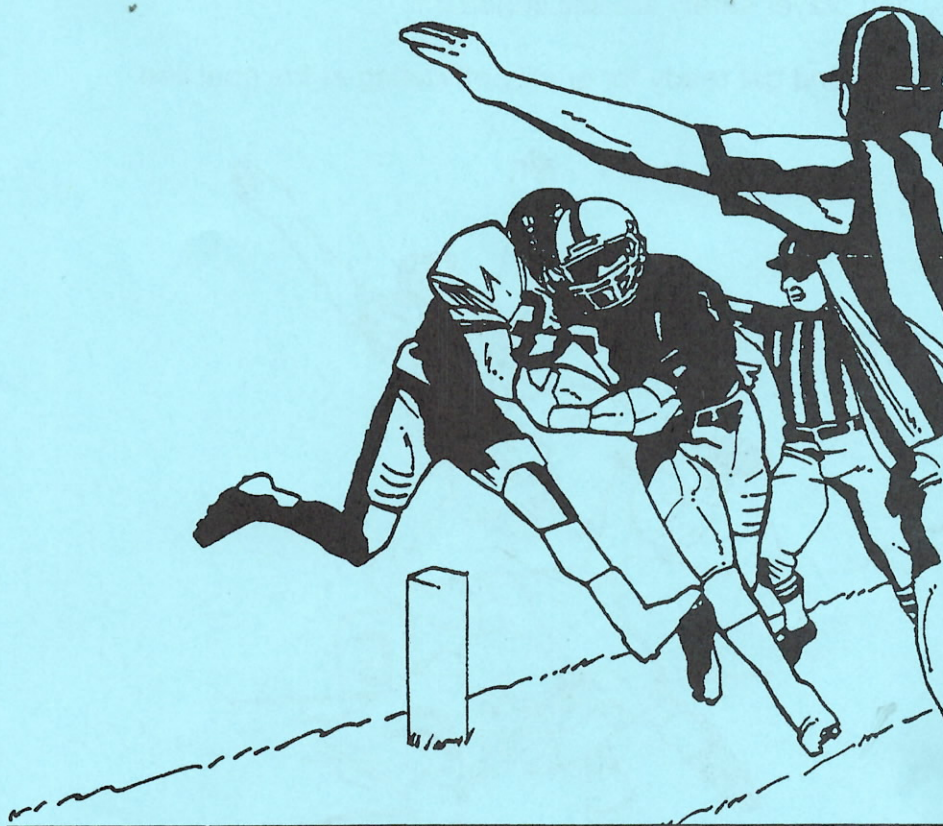


## A CLEAR FIELD OF VISION

*Sidelines are crowded and the bench areas appear to be becoming more congested while the area behind the end line is used for auxiliary seating or the band area. This does not leave much room for the officiating crew to get the job done. There is, a solution and it starts with **the pregame conference**. Use this time to discuss how the sidelines will be handled. Here are some other thoughts for consideration:*

Referees                      Include this as an agenda during team visitation prior to the game.

LJ. L SJ. FJ:                      Conduct a coordinated discussion on the requirements for sideline coverage, ball exchange, and coaching staff support. This is worth the time!!



It is better to establish this requirement up front rather than to miss a spot or a completion because of congestion on the sideline. We will have the cooperation of all personnel involved if we address the issue in a firm, professional manner. **Do it right the first time.**